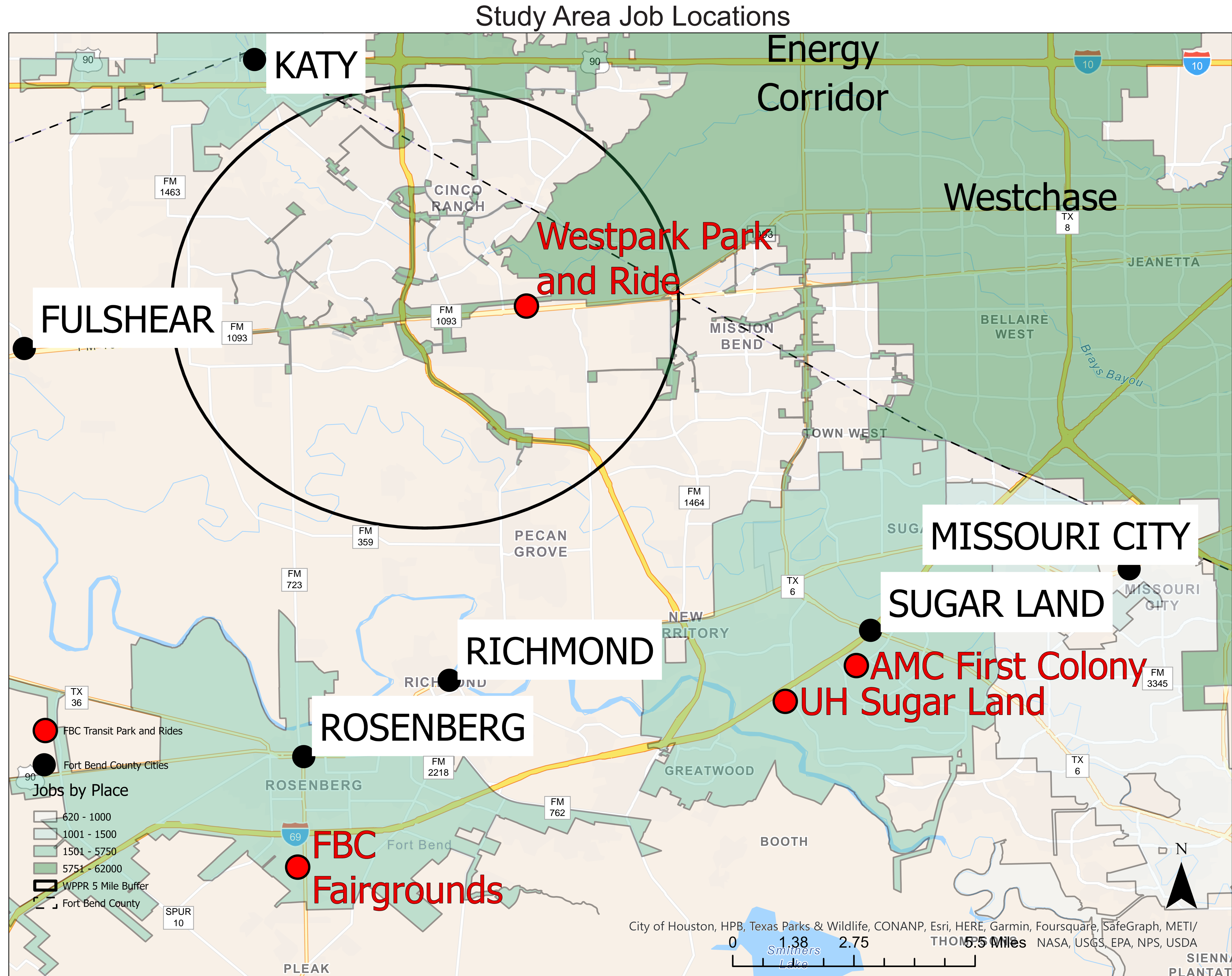
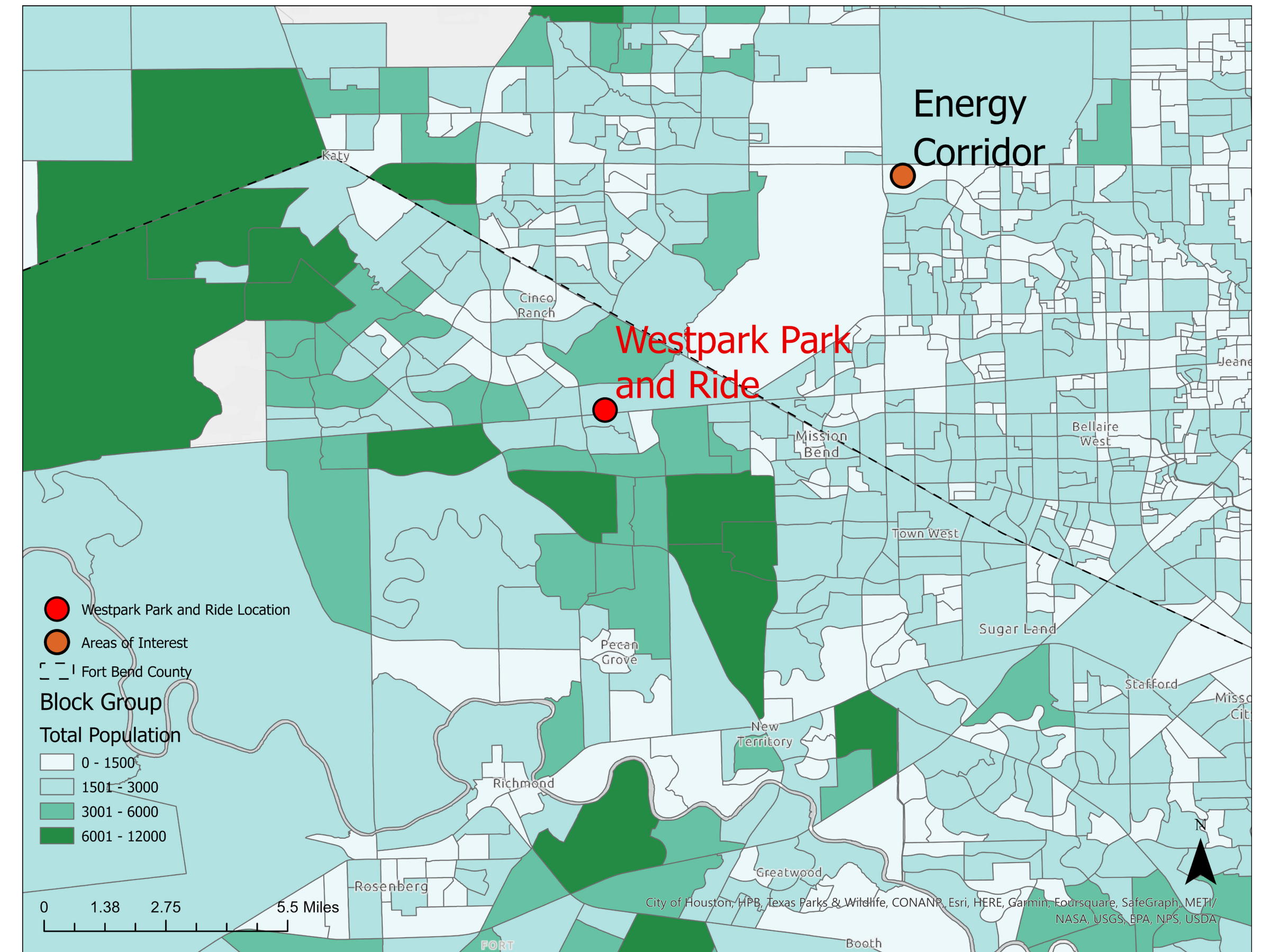


Study Area Demographics



The map above shows where people who live near the Westpark Park and Ride location work, with the vast majority (58.5%) working within the city of Houston. The next highest single location is Katy at 5.3%. This map shows that a majority of people within the 5-mile circle are traveling east to work within Houston city limits.

Study Area Population Density



The above map shows population density by block groups, with the darker colors representing a higher population. As this figure shows, there are a number of high density areas just south of the Westpark Park and Ride location and to the north (closer to the Katy area).

The major routes into the core of Houston are Westpark Tollway in the middle part of the county and US 59/69 in the south part of the county.

There are also denser areas closer to the Katy area and I-10. These could be served by the Westpark Park and Ride depending on commuting patterns and specific work locations.